



TORCH ENERGY SERVICES



AN EPC CONSTRUCTION COMPANY



ABOUT US

Torch Energy Services is a leading Engineering Procurement and Construction Company providing specialized services in Oil and Gas project, Power and Allied Industries.

Our primary focus has been on Customer Delight- brought about, by our rich task force of qualified, committed and experienced professionals to cater for the changing needs of the industry. The contribution of these professionals has resulted in passionate commitment to our clients - thereby delivering Engineering projects using the best available Technology and Product in terms of Quality and Timeliness bringing in added value to our clients.

VISION

To be among the first class Engineering Procurement and construction company in the industry through provision of excellent world class services to our clients with high quality performance and timely delivery while optimizing returns on capital.

MISSION

To consistently meet our Client's expectations through Safe Work Practices, Professionalism, Cooperation and Quality that is unmatched in the industry.

OUR VALUES

To be the most respected and successful Construction and Maintenance Company; to work together with our clients providing creative services that provide good value-for-money; to be recognized and respected both within our own industry and that of our clients; and to consistently demonstrate our professionalism



QUALITY POLICY

Torch Energy Services management team is committed to establishing, documenting, implementing and practicing a scalable Quality Management System to effectively manage Global Business Operations.

Quality performance is a commitment to excellence by Torch Energy Services employee and is achieved only by teamwork and process of continuous improvement.

We are dedicated to becoming a leader in delivering quality products and services which meets or exceeds the expectations of our valued clients.

HSES POLICY

TORCH ENERGY SERVICES recognizes the hazardous nature of its operations and adverse consequences of its failure to observe check and control or completely eliminate the acts and conditions that could result in accidents or incidents.

It is **TORCH ENERGY SERVICES** belief that good HSES POLICY shall form an integral part of her business and will vigorously pursue all accident prevention program through her well structure and effective HSES systems.

TORCH ENERGY SERVICES activities will therefore be organized, planned and executed so that:

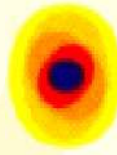
- The health, safety and security of all its employees and any person participating in the company's operations including subcontractors and third parties are safeguarded.
- A genuine respect for employees and society in general is encouraged, thereby contributing to the welfare of a concerned.
- Any possible undesirable effects of its activities on the environment are minimized.
- Damage and danger to materials and property is safeguarded.

Every employee of **TORCH ENERGY SERVICES** shall perform his/her work in accordance with this policy, and work must be suspended when it is believed that essential safety systems are not in place.

Organizational structures defining responsibilities, communication systems and comprehensive reporting procedures ensure that safety implications are taken into account throughout all facets of the company's activities.



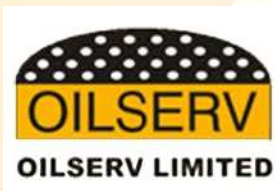
KEY CLIENTS & PARTNERS



Oando



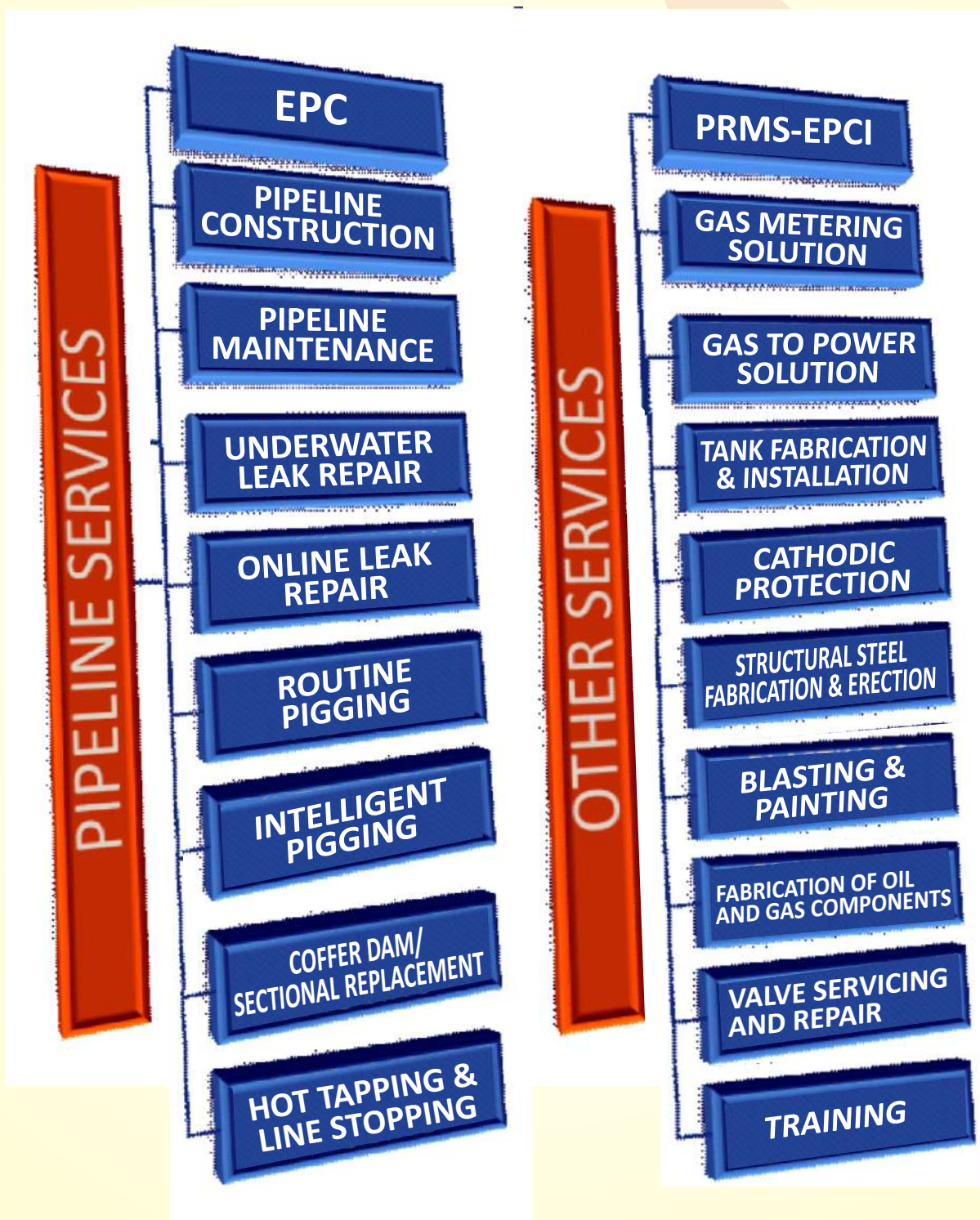
seplat



Notore



SERVICES





PIPELINE CONSTRUCTION

Torch Energy Services has successfully completed major Construction Projects. We have demonstrated our wealth of experience in virtually all aspects of Pipeline Transmission and Distribution from Engineering, Procurement and Construction to Routine Operation and Maintenance-related Scope.



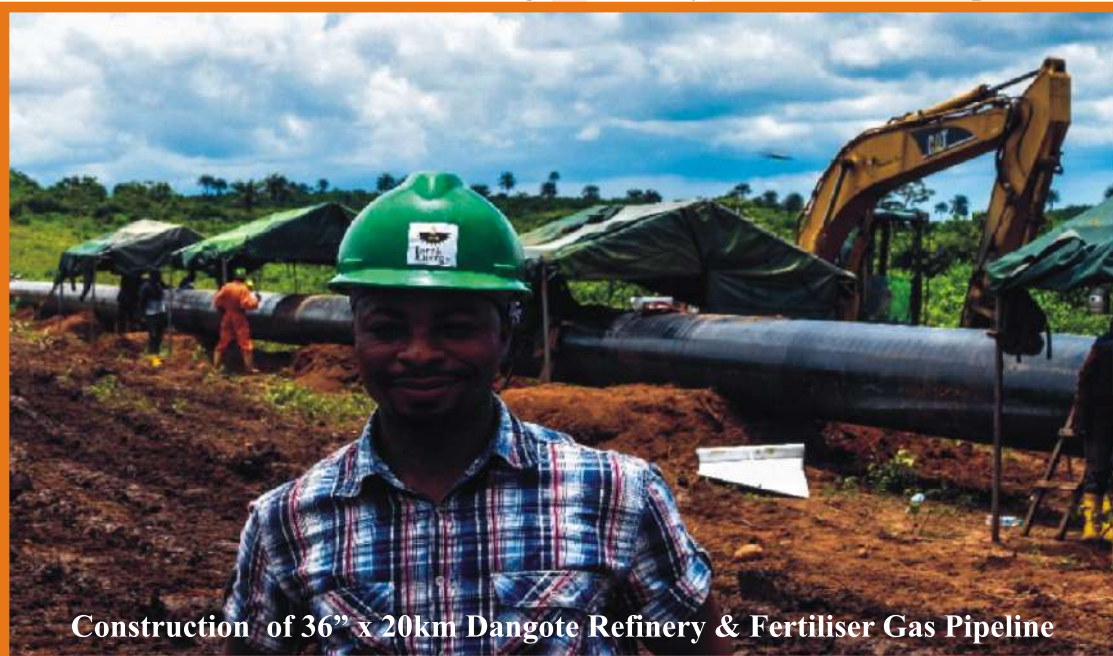
Construction of 36" x 20km Dangote Refinery & Fertiliser Gas Pipeline



Construction of 36" x 20km Dangote Refinery & Fertiliser Gas Pipeline



Construction of 36" x 20km Dangote Refinery & Fertiliser Gas Pipeline



Construction of 36" x 20km Dangote Refinery & Fertiliser Gas Pipeline





18" x 1.2km Egbema Power Gas Pipeline
PIPELINE CONSTRUCTION



PIPELINE CONSTRUCTION

12" x 10km Pipeline Baleine Project Abidjan



Fit up at KP 00



Welding completion at KP 00



COFFERDAM/SECTIONAL REPLACEMENT SERVICES



Our speciality is in providing top-tier cofferdam solutions configured to the demanding needs of the oil and gas industry. Our cofferdam services enable safe, efficient, and compliant offshore pipeline construction by creating temporary watertight barriers that isolate work areas from water ingress. With a focus on precision engineering and rapid deployment, we ensure your projects proceed without costly delays or environmental risks.





24 Inches Oron Gas Pipeline Repair Project (SWAMP)



RIVER NIGER CROSSING PIPELINE REPAIR



24" x 1.3km River Niger Agip Kwale-Akri Gas Pipeline Repair

RIVER NIGER CROSSING PIPELINE REPAIR



24" x 1.3km River Niger Agip Kwale-Akri Gas Pipeline Repair

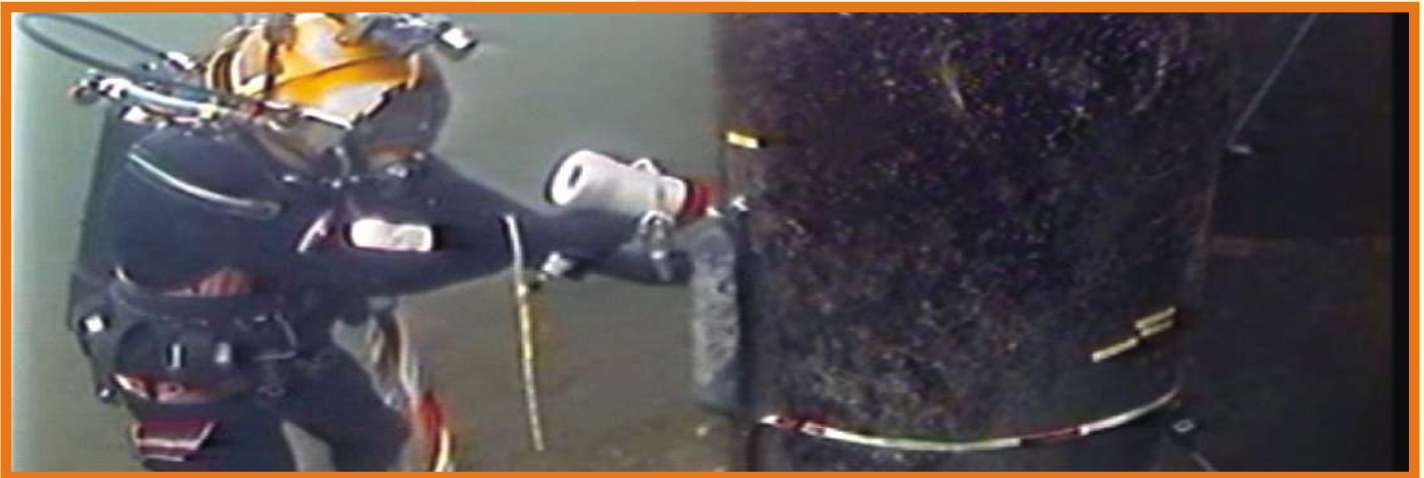
HOT TAPPING AND LINE STOPPING



FACILITY INTEGRITY SURVEY

One of our core capabilities in Torch Energy Services is provision of technical services in Material Engineering, Material Degradation and Asset Integrity Management with application to a wide range of facilities. Our focus is in the energy, power and allied sector which includes subsea and topside facilities for the offshore oil and gas industry, onshore and offshore pipelines, power generation plants, marine industry and renewable energy.

Our specialists include Material Engineering, Corrosion Management, Weld Specification and Qualification, Failure mode Assessment and Risk Analysis, Integrity Management Strategy Management Development, Design, Verification and Surveillance Services, Inspection Engineering and Management Services



UNDERWATER AND TOPSIDE FACILITY MAINTENANCE





UNDER WATER LEAK REPAIR



30" West Africa Gas Pipeline Leak Repair

ONLINE LEAK REPAIR



Torch Energy Services is the first indigenous company that has taken the on-line leak repairs of pipelines to a greater height having proven technology to stop vandalized pipe and corrosion defect leaks without shutting down the facilities. Our leak sealing technology applications to various leak facilities handled by our trained and seasoned professionals have made us to stand out in leak sealing operations in the oil and gas industry.



On-line Pipeline Leak repair on 30" Ughelli Gas Pipeline

ONLINE LEAK REPAIR



PIPELINE INTEGRITY SURVEY / INTELLIGENT PIGGING

Our company has the capacity to carry out onshore and offshore pipeline integrity survey with the best intelligent pigging tools. Torch Energy Services has experienced technical personnel that have been involved in pipeline integrity management (PIM) of over 5000km of various delivery and trunk pipeline



Intelligent Pigging of 18" x 34km Oben-Sapele Gas Pipeline



PIPELINE INTEGRITY SURVEY / INTELLIGENT PIGGING



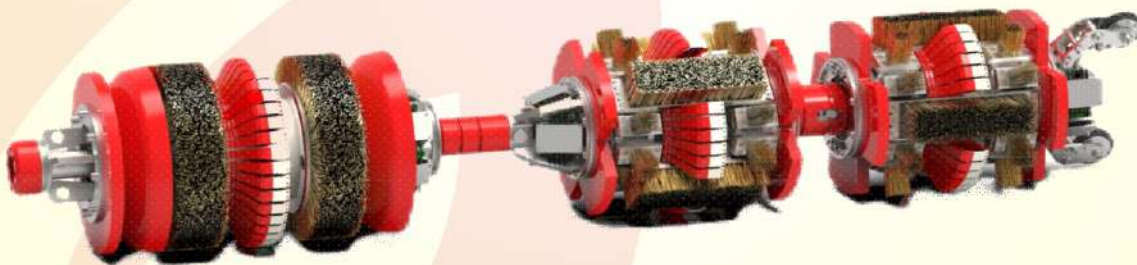
PIPELINE INTEGRITY SURVEY / INTELLIGENT PIGGING

MFL (Magnetic Flux Leakage) Tools



MFL+ TFI Inspection Tools

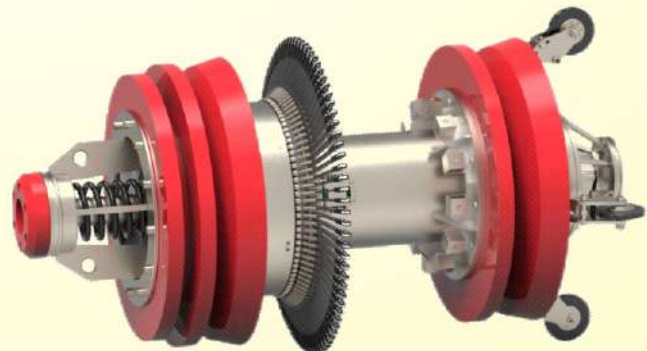
MFL : Magnetic Flux Leakage
TFI: Transverse Field Inspection



Self-Propelled Robot System with Built-in intelligence



Caliper



PIPELINE INTEGRITY SURVEY / INTELLIGENT PIGGING

In-Line Inspection Technology



PRMS MANUFACTURING & INSTALLATION

Torch Energy Services in conjunction with her technical partner operates a standard fabrication and modules/Skids Assembly facilities workshop. Our workshop is well equipped with wide range of material handling facilities, welding and fitting machineries that have the capability of producing a variety of fabrication works from design, manufacturing, testing and installation for oil and gas facilities.

Torch Energy Services in conjunction with her technical partners has the capability to fabricate and assemble pipeline complementary facilities such as PRMS (Pressure Reduction and Metering Skids), Pipes, Regulators, Flow Meters, Valves, Boilers and Packages etc.



PORCELAIN WARES 1MMSCFD PRMS



TOWER POWER 5MMSCFD PRMS



PRMS MANUFACTURING & INSTALLATION



IPI LIMITED 1.0 MMSCFD PRMS



Methoxide limited 1.0 MMSCFD PRMS

PRMS MANUFACTURING & INSTALLATION



2.0 MMSCFD PRMS COMMISSIONING FOR TEMPO STARCH & GLUCOSE LIMITED



PRMS MANUFACTURING & INSTALLATION



**FABRICATION AND INSTALLATION OF 9.0 MMSCFD
AT GASCO MARINE ABEOKUTA**



7.5 MMSCFD PRMS TO TEMPO PULP & PACKAGING

TANK FABRICATION & INSTALLATION





TANK FABRICATION & INSTALLATION



CEO AT WAPCO PROJECT SITES



CEO WITH WAGPCO OFFICIALS



CEO AT SAVANNAH PROJECT SITES CALABAR



CEO @ WAGPCO PROJECT SITES



CEO @ WAGPCO PROJECT SITES



TRAINING AND CONSULTANCY SERVICES

MANPOWER TRAINING

Torch Energy Services provides internationally recognized competence-based training and assessments in different aspect of industrial sectors. With the professional ability of our technical experts and investment in workshop facility we have capability to offer series of oil and gas training in a realistic industrial working environment. In addition to training, we have the capacity to supply manpower in various fields, including Engineering, Welding, Fabrication and other related fields.



Online Leak Repair Training

TRAINING AND CONSULTANCY SERVICES



Site Training on PRMS



Classroom Training on PRMS Lagos, Nigeria.



PROJECT EXPERIENCE

Project	Client
PIPELINE CONSTRUCTION AND INSTALLATION	
Construction of 36" x 20km Dangote Gas Pipeline Construction of 24" x 3.3km of AGIP Kwale - Akri Gas Pipeline	DANGOTE/ZAKHEM AGIP/AMAZON
Gas Supply to Abeokuta Customers:(EPCI) 8" x 5km & 2" x 5km; Gas Pipeline 0.25km River crossing to install 2" concrete coated pipe 24"- 8" Hot tap to supply the Tempo pulp and packaging	NGC NGC NGC NGC
Early Gas to Olorunsogo Power in Ogun State (EPCI) 14" x 1.2km Gas Pipeline to Olorunsogo Power Plant, Papalanto, Ogun State 18" x 1.2km Egbema Power Gas pipeline from Addax Flow Station Izombe 16" x 1 km Sapele Power Plant Gas Pipeline 4" x 1km Gas pipeline Construction in Banana Island, Lagos State	NGC/TABA NDPHC/OILSERVE NDPHC/NGC GENESIS/GELMARK
24 Inches Oron Gas Pipeline Repair Project (SWAMP)	SAVANNAH ENERGY
Tetracore Gas Pipeline Expansion Project Atakobo, Sagamu-Ore Expressway, Ogere, Ogun State	TETRACORE
THRUST BORING AND HDD SERVICES	
Thrust boring for the Installation of 26" Casing for gas pipeline to supply Guinness Brewery, Benin, Edo State.	IESL/BOAB
Thrust boring (Road Crossing) on Lagos-Abeokuta Express Road for the Installation of 12" x 65m Casing for gas pipeline	NGC
UNDER WATER PIPELINE REPAIR PROJECT	
Repair of 24" x 1.3km Pipeline of Kwale-Akri River Niger Crossing	AGIP/AMAZON
Inspection and underwater pipeline leak repair of 30inch Pipeline at Okomi Ota, Lagos	West Africa Gas Pipeline Company
Inspection and underwater pipeline leak repair of 30inch Pipeline at Araromi Badagry Lagos .	West Africa Gas Pipeline Company
Inspection and underwater pipeline leak repair of 18 inch Pipeline at Creek Town Uyo, Calabar.	Seven Energy/Accugas
EHGC Underwater P/L Inspection and Repair at Adiabo River Crossing	EHGC



PROJECT EXPERIENCE

ON-LINE LEAK REPAIRS	
PIPELINE 2INCH TO 36INCHES	
100+ Nos. On-line leak repairs of corroded and vandalized gas Pipelines with Pressure range between 20bar to as high as 78bar at various locations in the Niger Delta, Lagos and Lokoja axis. (Pipe size ranging from 2" to 36")	SEPLAT, NGC/NGMC, SAVANNAH, OANDO, SEPLAT, SEVEN ENERGY,
Online Leak repair of 30" West Africa Gas Pipeline, Ogun State.	WAGPCO
8 nos. 24" of online leak repairs of corroded and vandalized oil pipelines at Sapele	SEPLAT PETROLEUM
3 nos. of online leak repair of internal cooling water system with pressure rating of 35 bar.	NOTORE CHEMICALS
4 nos. of online leak repair on gas pipeline in Lagos and Calabar with pressure rating between of 35 - 60 bar.	OANDO/GASLINK
Valve / Flange Leak Repair at ELEM PETROCHEMICAL, WARRI	INDORAMA ELEM PETROCHEMICAL
Leak Repair of 24" flange at AGIP gas plant, Kwale.	Kumbi/AGIP
Leak Repair of QUO Flow lie 12 Inch EKET	
PLANT LEAKS REPAIR NOTORE, ELEM PETROCHEMICAL, UNICEM, LARFARGE, AGIP GAS PLANT	
PRMS SUPPLY, INSTALLATION AND COMMISSIONING (EPC)	
Supplied and Installed 1.0 MMSCFD, dual stream PRMS, P(inlet) 50bar, P(outlet) 5-8 at IPI Ltd.	Nigeria Gas Company (NGC)
Supplied and Installed 0.5 MMSCFD, dual stream PRMS, P(inlet) 50bar, P(outlet) 5-8 at Methoxide Ltd.	Nigeria Gas Company (NGC)
Supplied and Installed 2.5 MMSCFD, dual stream PRMS, P(inlet) 50bar, P(outlet) 6-10 at Midland Ltd.	Nigeria Gas Company (NGC)
Supplied and Installed 0.5 MMSCFD, dual stream PRMS, P(inlet) 50bar, P(outlet) 5-8 at Arco Product Ltd.	Nigeria Gas Company (NGC)
Supplied and Installed 1.0 MMSCFD, dual stream PRMS, P(inlet) 50bar, P(outlet) 5-8 at Porcelain Wares Ltd.	Nigeria Gas Company (NGC)
Supplied and Installed 5.0 MMSCFD, dual stream PRMS, P(inlet) 50bar, P(outlet) 5-8 at Tower Power Ltd.	Nigeria Gas Company (NGC)
Supplied and Installed 2.0 MMSCFD, dual stream PRMS, P(inlet) 50bar, P(outlet) 2-8 at Tempo Starch and Glucose Ltd.	Nigeria Gas Company (NGC)
Supplied and Installed 2.0 MMSCFD, dual stream PRMS, P(inlet) 65bar, P(outlet) 5-8 with heater at Tempo Pulp and Packaging Ltd.	Nigeria Gas Company (NGC)



PROJECT EXPERIENCE

PIPELINE INTERGRTRY SURVEY/INTELLIGENT PIGGING	
Intelligent Pigging of 18" X 35KM Oben-Sapele Gas Pipeline, Delta State	NDPHC/CMES
18" Oben-Sapele Gas Pipeline Coating Protection Evaluation	NDPHC/CMES
CATHODIC PROTECTION	
Permanent Cathodic Protection installation for Gas Pipeline Construction in Banana Island 4" X 1 Km Gas Pipeline	Genesis Electricity / Gelmak
Cathodic Protection on 16" Sapele Power Project	NDPHC/KAZTEC
Cathodic protection for metering station/ 18" x 34km Oben-Sapele Pipeline	NDPHC/CMES
Cathodic Protection Evaluation on 18" Oben - Sapele Gas Pipeline	NDPHC/CMES
FABRICATION AND INSTALLATION	
Fabrication (Inspection, Non Destructive Testing, Blasting, Painting and Installation) of 35Nos Wellhead at Musheshe Yard, Warri, Delta State.	SHELL OIL AND GAS / DEC OIL AND GAS
16"-18" Tie-in section to Flow control manifolds at Sapele NGC Metering Station	NDPHC/CMES/KAZTEC
THRENCHESS PIPE INSTALLATION	
Thrustboring for the Installation of 26" Casing for gas pipeline to supply Guinness Brewery, Benin, Edo State	IELS/BOAB
Thrustboring (Road Crossing) on Lagos-Abeokuta Express Road, for the Installation of 12" x 65m Casing for gas pipeline to supply Tempo Starch and Glucose Abeokuta	Nigeria Gas Company (NGC)
Thrustboring (Railway Crossing) for the Installation of 12" x 20m Casing for gas pipeline to supply to Abeokuta Customers	Nigeria Gas Company (NGC)
Thrustboring (Road Crossing) on Adigbe Express Road, for the Installation of 12" x 45m Casing for gas pipeline to supply Tempo Starch and Glucose Abeokuta	Nigeria Gas Company (NGC)

PROJECT EXPERIENCE

S/N	DATE	PROJECT	CLIENT	STATUS
1	OCT 2002	Sandblasting of 12 tanks	A-Z PETROLEUM	Completed
2	2005	Provision of labour services for LOBP tanks	AP PLC	Completed
3	2005	Design of ethanol Distilery/storage Tanks	DURACLEA CHEMICALS	Completed
4	2006	Sandblasting/painting of 15tanks	GRAND PETROLEUM	Completed
5	2006	Design of 15,000MT tank farm	APPLC/ASCOT PETROLEUM	Completed
6	2006	Construction of 2 X 500MT tanks	APPLC/ASCOT PETOLEUM	Completed
7	2007-2009	Construction of 7500MT/5000MT tanks,loading gantry, pump house	CYBERNETICS	Completed
8	2009	Constructuion of tank bases	RAINOIL	Completed
9	2010	Provision of labour for construction of four tank	PETROSTAR/IPI	Completed
10	2009-2011	Procurement and installation of floating suction in all ATK tanks	CONOIL PLC	Completed
		Procurement , construction and installation of foam tanks/pipeline sprinkler system for all ATK,AGO and PMS loading gantry and product tanks	CONOIL PLC	Completed
		Fabrication and installation of 12m exolosion proof flood light in the entire tank farm.	CONOIL PLC	Completed
11	2012	Construction of underground tank	DELLARCH, PHC	Completed
12	2012	Construction of overhead tank foundation	DELLARCH,PHC	Completed
13	2012	Design of the WOSBAB tank farm	WOSBAB LTD	Completed
14	2012	Design of tank farm	ENEGAS LTD	Completed
15	2012-2013	Design of EMADEB tank farm in ijegun	EMADEB	Completed
16	2012-2013	Construction of one PMS tank -installation of internal floating roof (IFR) in the PMS tank	EMADEB	Completed
17	2014	Design of 70,0000MT tank farm	CLAIRGOLD	Completed
18	2015	Procurement and installation of internal floating roof IFR (from ultraflote) for two PMS tanks ibafon,apapa	GULF TREASURE OIL & GAS	Completed
19	2015-2017	Design and construction of three PMS product tank in HENSMOR depot in dockyard road,apapa and procurement of (IFR) internal floating roof for the three tanks. Replacement of damaged roof of a base oil tank is ongoing	HENSMOROIL & GAS	Completed
20	Dec 2018	Demolition of 300,000-liter tank at katampe abuja. Construction of 2 x 300,000 -liter tanks and 50,000 liter vertical discharge tanks at sino china dam.	ASHARAMI SYNERGY	Completed
21	2020-2021	Supply of paint and painting of 4 vertical storage tanksand 2 slop tank and inscription of company logos on each tank in Rosa mystica energy depot, calabar free trade zone, calabar	NORTHWEST PETROLEUM	Completed
22	DEC 2018	Construction of 3m x6 vegetable oil storage tanks including installation of heating coils in three tanks. Installation of different units of the vegetable oil refinery	NOSAK LTD	Completed



CONTACT

KM 46, LAGOS-IBADAN EXPRESSWAY BY
REDEMPTION CAMP, MOWE, OGUN STATE.

LAGOS OFFICE

59, LEKKI COUNTY HOMES,
AJAH, LAGOS.

UYO OFFICE:

2, EKPA STREET, BABAGINDA ROUND ABOUT,
UYO, AKWA-IBOM

PHONE

+234 703 712 4747, +234 807 166 1273

EMAIL ADDRESS

torchenergyng@gmail.com
info@torchenergygroup.com

WEBSITE

www.torchenergygroup.com

